

French Delegation in Architecture Urbanism & Landscaping



Architectes
Français
à l'Export

AFEX

November, 2021



Madeleine Houbart
AFEX Secretary-General

French Overseas Architects

▶ Non-profit association with more than 200 members: a hundred architecture firms but also engineers, planners, landscape architects and manufacturers, aiming to assisting international companies and institutions in search of French expertise.

FRENCH DELEGATION

Architectes
Français
à l'Export

AFEX



AIA LIFE DESIGNERS

TOWARDS
HEALTH ORIENTED DESIGN



FONDATION AIA

ARCHITECTURE
HEALTH
ENVIRONMENT

1965
2021

56 YEARS OF
EXPERIENCE



650 STAFF



14 LOCATIONS

- AIA ARCHITECTS
- AIA ENGINEERING
- AIA MANAGEMENT
- AIA PLANNING
- AIA ENVIRONMENT

5 COMBINED
DISCIPLINES

4 FIELDS OF EXPERTISE



HEALTH
& WELL BEING



URBAN
PLANNING



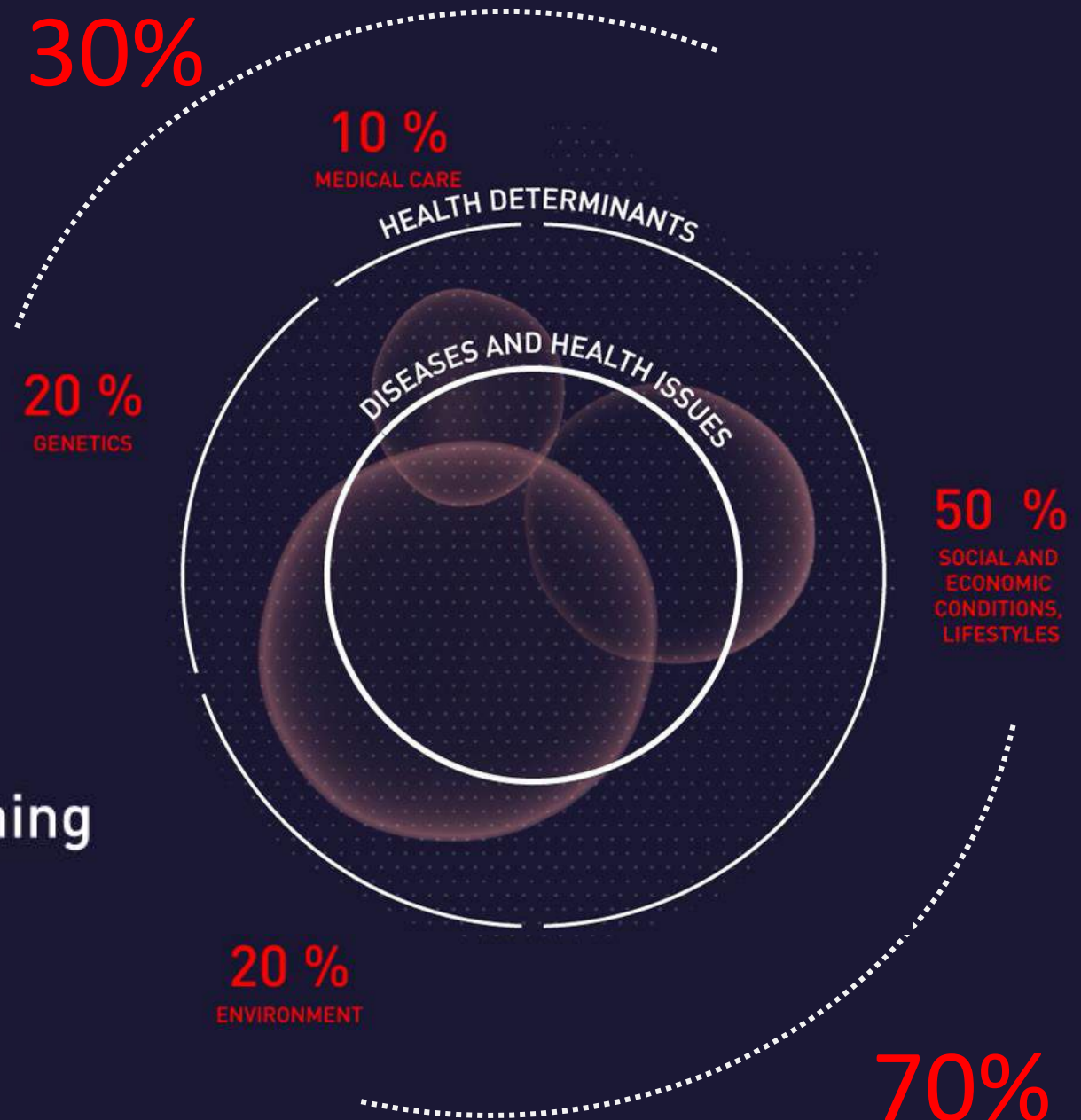
PUBLIC
FACILITIES



GENERATIVE
CITY

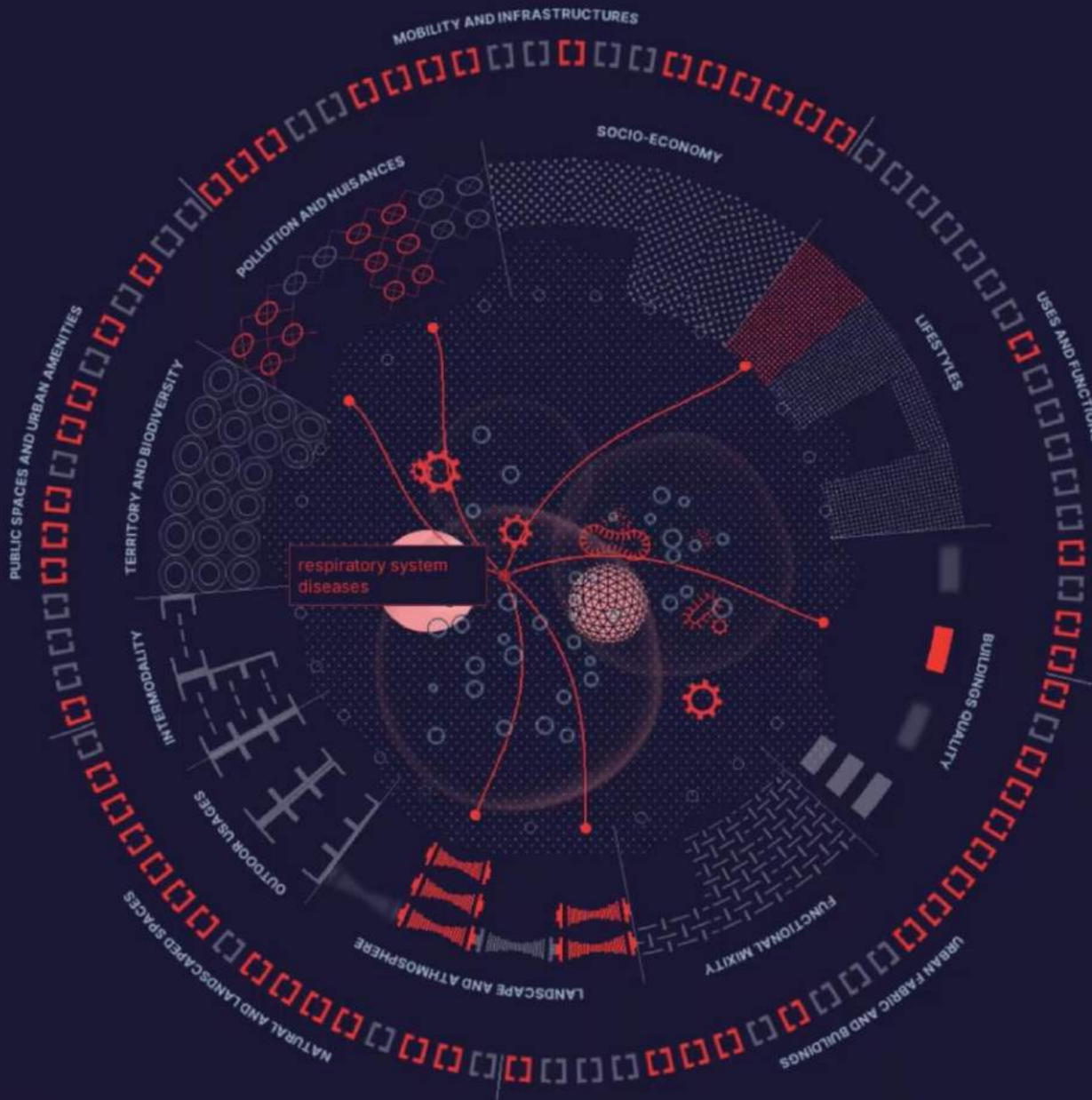
According to recent scientific studies, only 30% of individual health status is determined by genetics and medical care.

The living environment has indeed a preponderant influence on the remaining 70% of health determinants.



Then by clicking on “show bibliography”,

the data is displayed in the form of a list, with access to the bibliographic sources at the origin of the displayed relations.



Diseases and health issues

- respiratory system diseases
- circulatory system diseases
- all-cause mortality
- cancers (different types)
- overweight and obesity
- mental disorders
- premature mortality
- learning and cognitive under-performance
- eyes cancers and diseases
- stress, anxiety and mood disorders
- stress-coping incapacities
- thermal stress
- accidental traumatic injuries
- genital organs, reproduction and fertility disorders
- type 2 diabetes
- prematurity, gestation or fetal growth disorders
- congenital malformations and deformations
- miscarriage and spontaneous abortion
- lung cancers
- hypertensive disorders of pregnancy
- neurodegenerative diseases
- heart diseases

oja, 2011 / xu, 2013 / gibson, 2011 / thomson, 2009 / who, 2005 / who, 2016 / pijpers-van esch, 2015 / atkinson, 2014 / lacasana, 2005 / mehta, 2011 / song, 2014 / favarato, 2014 / pijpers-van esch, 2028 / + 24

Health determinants

- active transportation choice
- indoor air quality and hygrothermal comfort
- multi-sensory outdoor comfort and diversity
- aeraulic and hygrothermal outdoor comfort
- air pollution and electromagnetic fields low exposure
- road traffic low exposure

davison, 2006 / d'haese, 2015 / hajna, 2015 / mccormack, 2011 / rothman, 2013 / lindberg, 2011 / caloguri, 2014 / who, 2016 / gibson, 2011 / thomson, 2009 / who, 2005 / pijpers-van esch, 2015 / atkinson, 2014 / + 26

Urban context and planning

- proximity between places of residence and education
- land use mix and pedestrian access to first necessity offer
- public transport access and availability
- infrastructures for road safety and traffic limitation
- street network without interruption or usage conflict
- residential density
- formal or informal playing open spaces access
- neighbourhood walkability
- active transportation network connectivity
- cycling infrastructures
- urban sprawl interruption
- vegetation in public spaces

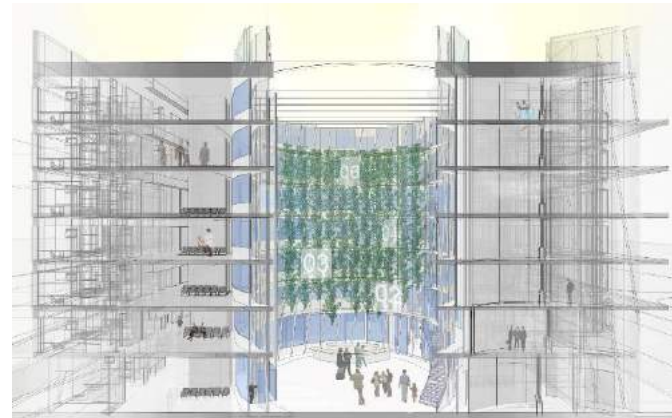
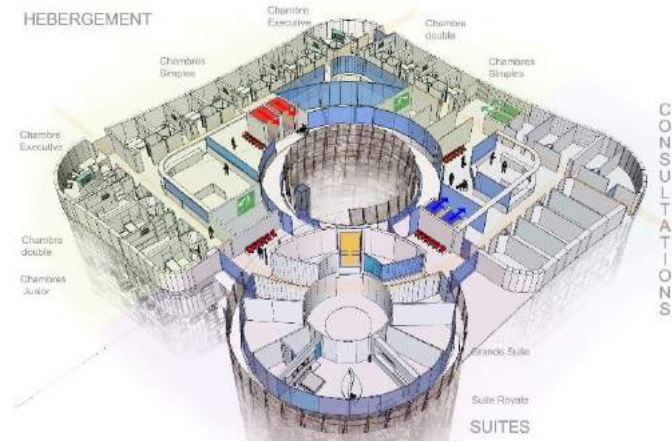
ROLAND GARROS AIRPORT ST DENIS - LA REUNION

33 500 m²
Delivery 2022



FRENCH-EMIRATI HOSPITAL, ABU DHABI, UAE

27 000 Sqm, 100 Beds, Delivery 2013



PRINCESS GRACE OF MONACO PUBLIC HOSPITAL

85 000 Sqm, 400 Beds, Delivery 2027



IBN SINA HOSPITAL, RABAT, MOROCCO

180 000 Sqm., 800 Beds Delivery 2024

A BIOCLIMATIC SKIN
THAT PROTECTS FROM
SUN AND WIND,
COLLECTS WATER,
PRODUCES ENERGY,
BRINGS NATURAL VENTILLATION
AND GIVES ACCES TO NATURE



AW2



AW² is an international architecture and interior design agency based in Paris established in 1997.

The studio is run by Reda Amalou and Stéphanie Ledoux, partner architects. Design team of 45 people in Paris and partner office in Vietnam.

With projects in 40 different countries, the studio has an international reputation for high-end design.



- A sense of place: understanding the location in all of its richest features and characteristics
- The context that nourishes the idea: knowing how to read and understand the cultural, climatic, programmatic, and economic contexts
- Sustainable design: making use of immediate resources, indoor outdoor living
- Architecture as an answer: designing projects that respond to both the program and the context



DESIGN APPROACH



ASHAR VALLEY MASTERPLAN



ELOUNDA, GREECE



AMANJENA, MOROCCO



DOMINO LAMP

COMPETENCES: MASTERPLANNING, ARCHITECTURE, INTERIORS, FURNITURE DESIGN

Design by **AW²**
PARIS



WINK HOTEL SAIGON CENTRE, VIETNAM



PHUM BAITANG, CAMBODIA



SILVERSANDS GRENADA



KASIYA PAPAGAYO COSTA RICA



FOUR SEASONS THE NAM HAI, VIETNAM



SIX SENSES CON DAO, VIETNAM

HOSPITALITY PROJECTS



ASHAR TENTED RESORT
aiuia, Saudi Arabia



luxury tented resort : 47 tented suites, spa, Gastronomic restaurants
accor - banyan tree - UNDER CONSTRUCTION

Design by **AW²** PARIS

ARCHITECTURE STUDIO

architecturestudio,



13 partners architects



150 architects, urban designers, landscape architects and interior designers



3 offices : Paris (France), Shanghai (China), Zug (Switzerland)
Achievements on 5 continents for more than 40 years



Architecturestudio, European Parliament, Strasbourg, France

Public buildings,



Architecturestudio, National Theatre of Bahrain

Cultural buildings,



Architecturestudio, Port Marianne Mixed Area - Parc Marianne, City of Montpellier, France, 80 ha



Architecturestudio, and Michel Desvigne Paysagiste - Urban and Landscape Design in Lusail, Doha, Qatar, 200 ha



Architecturestudio, Amman Rotana Hotel, Jordan

City making,

Hospitality, residential, offices & mixed use,







FORM
فُورم

HOTEL
فُورم

FORM HOTEL





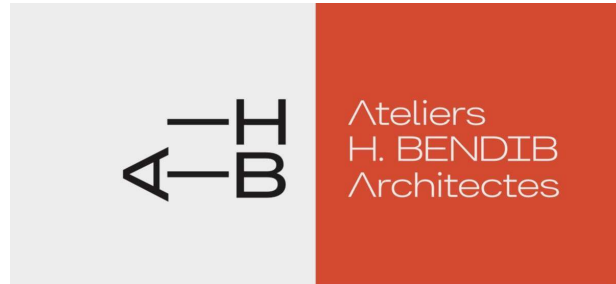
PALM VILLA

DUBAI, UAE



A I H
I B I

Ateliers
H. BENDIB
Architectes



Founded by Houda BENDIB, Ateliers HB Architectes is an agency composed of a young team of architects, working in Paris (FRA) and Algiers (ALG).

The agency answers to all kinds of projects, from individual houses to collective dwellings and public equipments.

AHB Architectes works on public and private markets, from small to bigger budgets. We think that a project isn't a matter of area nor materials, but a matter of use.



Houda BENDIB
Architect



Thomas FIERS
Architect



Meryem BENNOUNA
Junior Architect



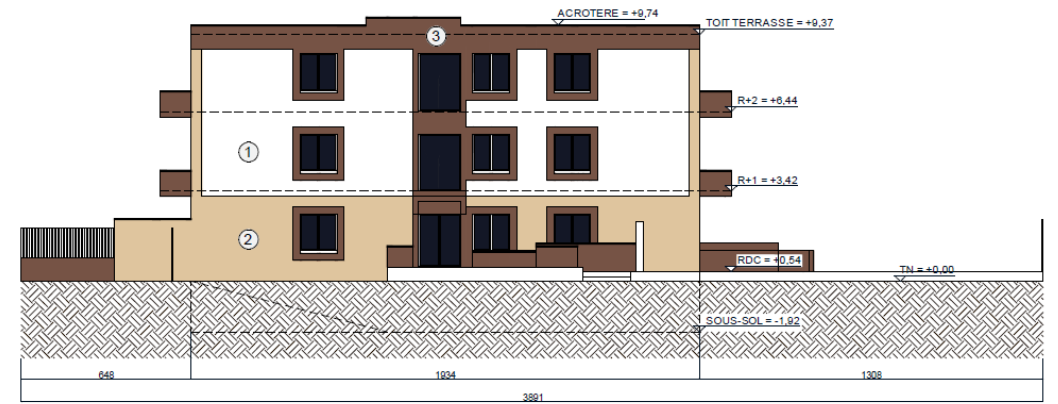
Adel BOULMELH
Public Works Engineer



Olivier MELCER
Diagnostician



Mustapha SALEM
Engineer / Project Manager



**Construction of forty-five collective housing
in Seine-et-Marne, France**

Low heights have been given to the buildings so that they can integrate in harmony with the surrounding individual houses.



**Renovation of an individual housing building
in Reuil-Malmaison, France**

A complete renovation and the installation of exterior insulation compose this project aimed at modernizing the general appearance of the building.



Elevation of three condominium apartments in Levallois-Perret, France

Wooden cladding and large green terraces give the building a natural crown in phase with our era and the actual environmental matters.



Extension of a private mansion in Paris, France

The very detailed appearance of this Parisian townhouse has been repeated on the added part, to maintain an overall consistency with the original period of the building.



Construction of an office building in Algiers, Algeria

A silhouette mixing slender curves and variation of volumes according to the floors, gives the project a resolutely contemporary character.



Creation of a subdivision of 7 individual houses in Val-de-Marne, France

Three different typologies of houses have been developed to compose the general layout of the land, which gives pride of place to green spaces.



**CELNIKIER & GRABLI
ARCHITECTES**



French Pavilion
at the World Expo,
Dubai

Founded by Jacob Celnikier and Pascal Grabli, Celnikier & Grabli Architects has been defending a generous and sensitive idea of architecture since 2005, in fields that are often considered difficult and restrictive.

We are not intending to write the history of architecture, but of participating in the history of the people who take part in our architecture, an architecture that belongs to them.



Jacob Celnikier
and Pascal Grabli

Climate and Environment
Research Institute,
Saint-Aubin



Neuroscience Research
Centre, Saclay



Neuroscience Research Centre, Saclay

CLIENT

CEA

SURFACE

16 700 m² of floor area

BUDGET

41.4 M€ HT

DELIVERY DATE

2020

TEAM

Dietmar Feichtinger, *mandating agent*

Celnikier & Grabli Architects, *architects*

Ingerop Conseil & Ingénierie, *BET TCE, economics, laboratory expertise*

PROGRAMME

Animal housing facility, research centres and platforms, reception and communication centre, an auditorium



Redevelopment of the Yves-du-Manoir Stadium, Colombes

CLIENT
Department
of the Hauts-de-Seine

SURFACE
7 000 m² buildings
155 000 m² facilities

BUDGET
55 M€ HT

DELIVERY DATE
2023

TEAM
Celnikier & Grabli Architects
LEON GROSSE, *mandating agent*
OLGGA, *Architects associés*
VERDL, *BET*
MCPaysages, *landscaping*
Éléments Ingénieries, *HQE*

PROGRAMME
Buildings-tribune 1,000 seats for
Olympic hockey and 300 seats
for rugby, 4 football fields,
3 rugby fields, 3 hockey fields



PARIS 2024



New building of the Sainte-Périne Hospital, Paris

CLIENT
AP-HP / Assistance Publique-
Hôpitaux de Paris

SURFACE
17 300 m² of floor area
dont 2 300 m² of green terraces

BUDGET
41,1 M€

DELIVERY DATE
2022


TEAM
Celnikier & Grabli Architects
Lazo & Mure Architects,
mandating agent
Igreç ingénierie, *BET*
Éléments Ingénieries, *HQE*
CICAD, *OPC*
Impedance, *BET*
Bruno Fortier, *urban planner*

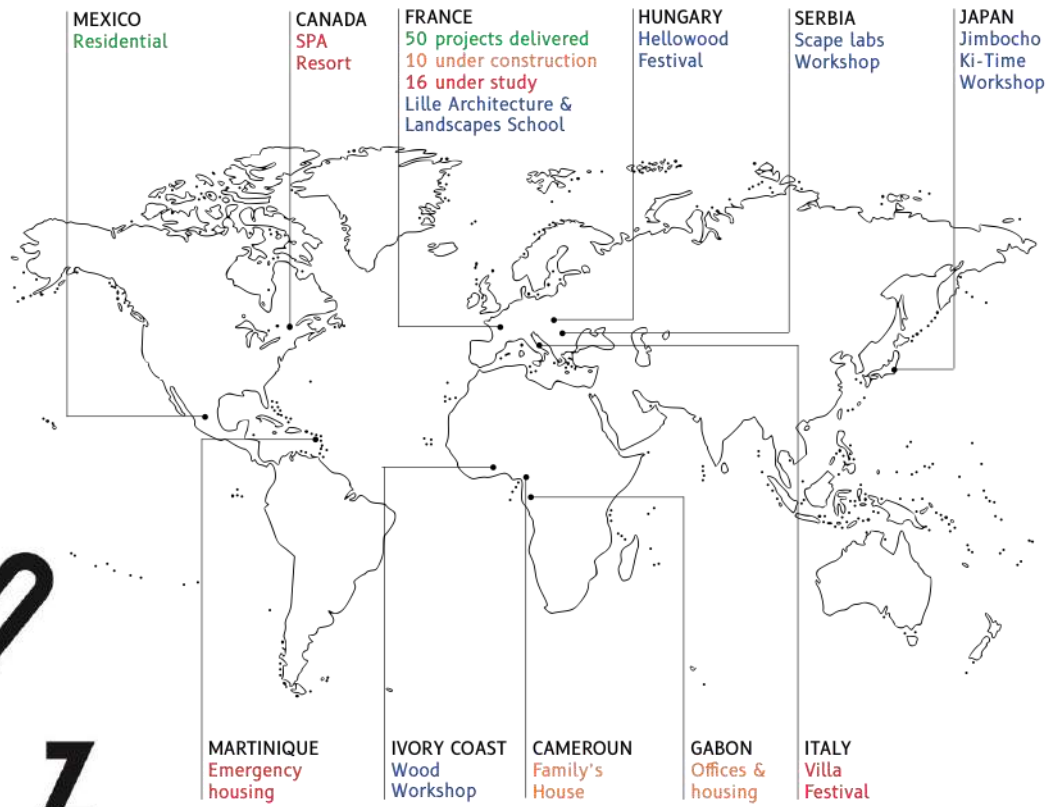
PROGRAMME
260 beds dedicated to geriatric
pathologies, central kitchen,
laundry, pharmacy





KOZ

K

Z



ON GOING



URBAN PLANNING & RESIDENTIAL : 50%

Paris 2024 Athletes' Village
Village
PARIS REGION



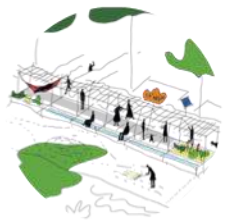
SPORT : 8%

Joinville-en-Champagne sports complex
FRANCE



RETAIL : 8%

Halle des Docks
PARIS REGION



CULTURE : 8%

Villa Medici small building festival
ITALY



OFFICE : 4%

Ministry of Education
PARIS REGION



HEALTHCARE : 4%

Family's House
Laquintinie Hospital
DOUALA



EMERGENCY HOUSING : 4%

OPHROM government program
MARTINIQUE



HOSPITALITY : 4%

Golf resort & SPA
CANADA



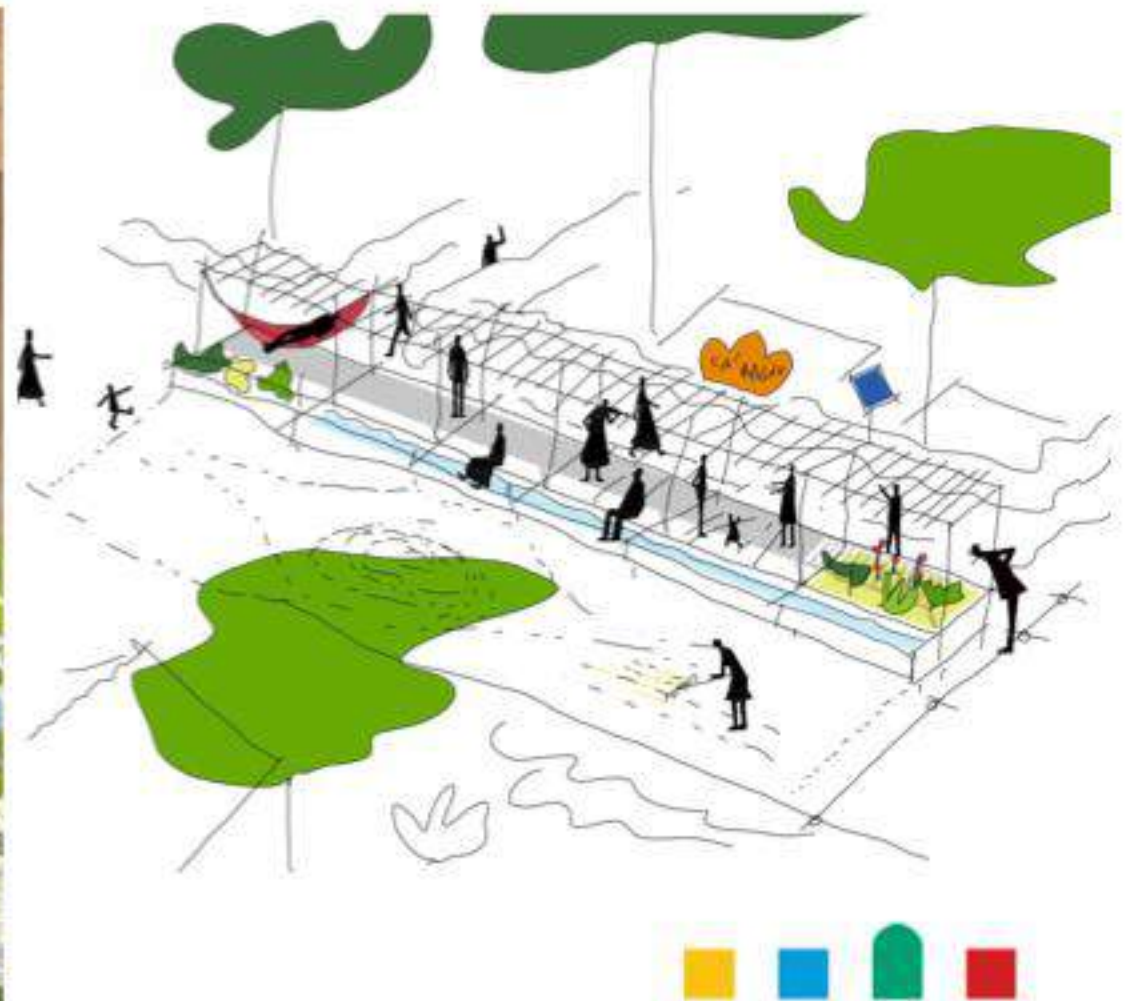
The Athlete's Village for the Paris 2024 Games / Under construction





Tout l'esprit de Maison+Objet dans Paris
PARIS DESIGN WEEK
9-10 SEPT. 2021 #PDW21 WWW.PARISDESIGNWEEK.FR MAISON+OBJET

WOODGROW:
The world's smallest urban forest



VILLA MÉDICIS
ACADÉMIE DE FRANCE
À ROME

2022 SMALL ARCHITECTURE FESTIVAL:
Entrance pavillon

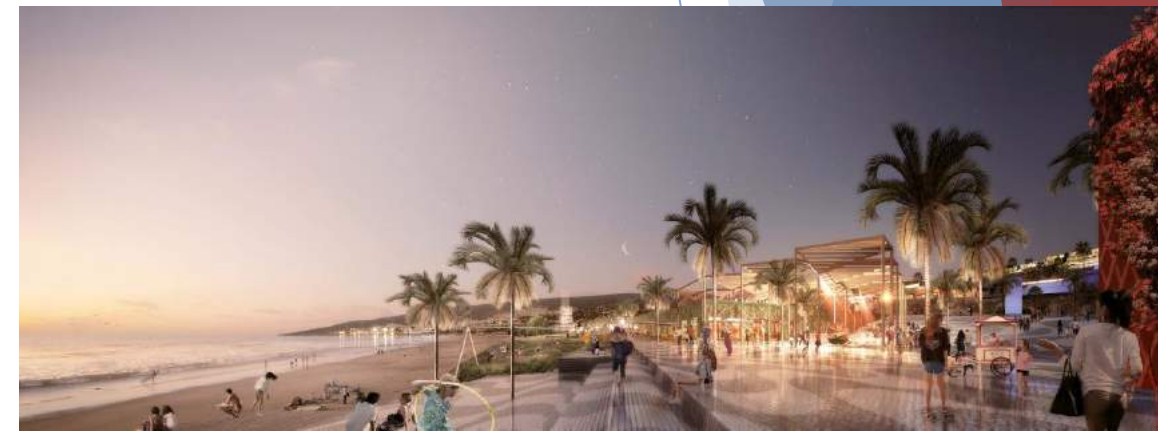


EIFFEL'S FOREST: A net zero carbon upgrade for a world landmark / Int. Competition, 3rd prize

Maison Edouard François (MEF)



Maison Edouard François (MEF) was founded in 1998. Our studio is a **world pioneer of the Green Architecture.** Our work focuses on the integration of natural and built environments, materials, contexts, and use. It includes **emblematic residential developments, luxury hotels and resorts and resilient urban developments.** Edouard is an **International Fellow of the RIBA**, and his work is part of the collections of Victoria & Albert Museum, Centre Pompidou or the Canadian Centre for Architecture. MEF has imagined resorts, office and residential buildings in the UAE, Qatar and Oman.



Hotel Cheval Blanc LVMH

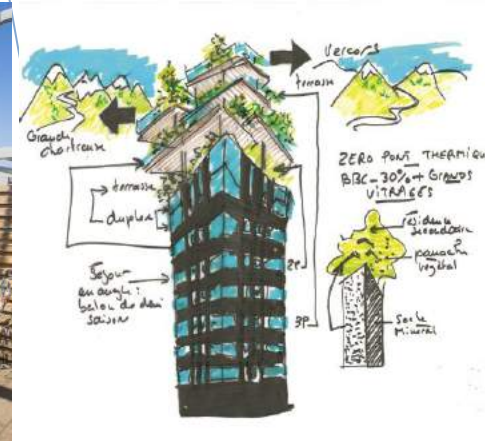
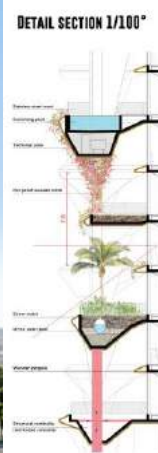
Hotel - 14000 m2 – 150M€ - 2021 - Paris

First hotel in Paris for LVMH, 1928 heritage building. Complete refurbishment into a 5 stars Hotel in front of River Seine. 62 Rooms, a 1000 m2 apartment, Back of the house, F&B, Fitness Center with Semi Olympic Pool.

Resort Taghazout

Eco Resort – 70000 m2 – 60 M€ - 2014 – Morocco

Holiday rentals, Retail, Hotel, Restaurants within a unique natural bay. Creation of five « villages » in Rammed earth.



Giverny Oasis

Residential - 5500 m2 – 15M€ - 2019 - Cyprus

20 high end units, one per floor with planted terraces and private pools. Ceilings from 3.5 to 7 meters high. New technologie of planted cones with water storage in parallel of the structure.

Panache

Residential– 4000 m2 – 6 M€ - 2017 – France

42 units, 30 private independent terraces on top. Height for all. 2/3 of the units have access to a private terrace on top of the building with a living room, a kitchen and a WC and a 40 m2 balcony.



Le Ray
Residential, Retail, Park - 25000 m2 – 45M€ - 2021 -
Nice

Europe's longest green facade. 350 units, a shopping mall and a 30000 m2 park. Open ground at the bottom of buildings with climbing plants on a wooden structure.

La Rue Bordelaise
Mixed-use – 100k m2 – 150 M€ - 2025 – Bordeaux

New entrance for Bordeaux. Urban redevelopment all in solid stone and wood. Pedestrian shopping mall with residences, hotel, offices. Permeable soil and urban forest.

origin

WHERE PLACE MEETS USE.



LIVE

A modern office building with a large overhang and palm trees. The building features a facade of light-colored panels and dark windows. The overhang is a prominent architectural feature, supported by a series of columns. The ground is paved, and there are some plants and palm trees in the foreground. The sky is clear and blue.

WORK


CRÉDIT AGRICOLE
A whole bank just for you

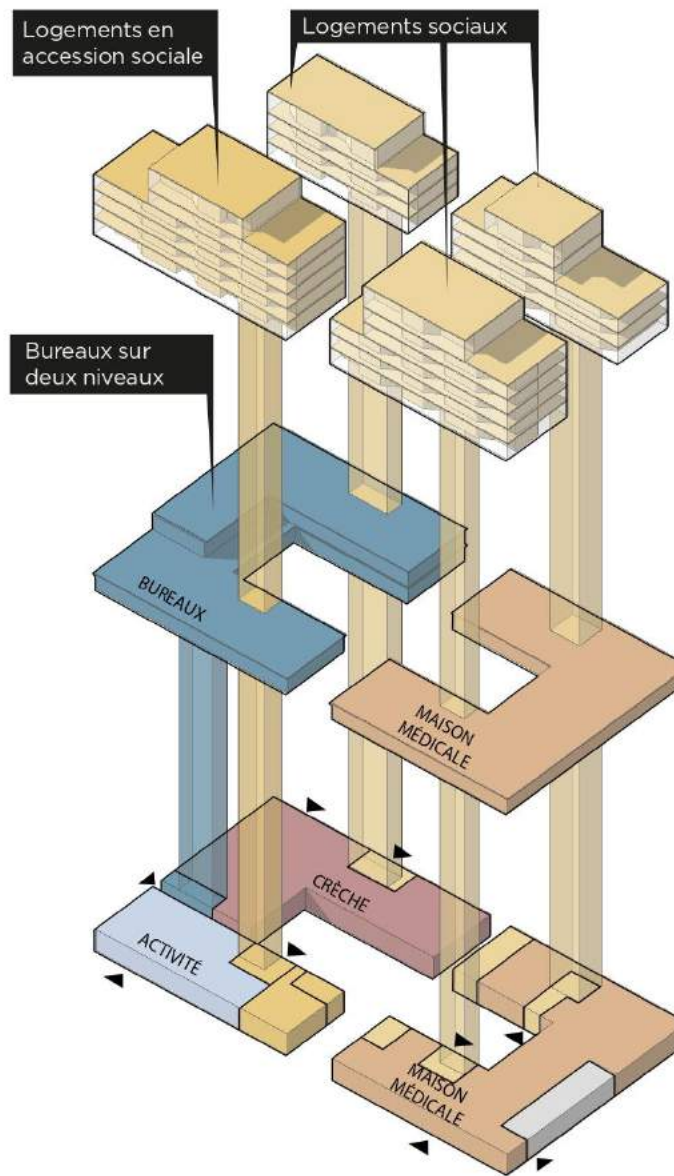


PLAY

PARIS SAINT-GERMAIN



PPX



PPX

PETITDIDIERPRIoux
ARCHITECTES



Founded in Paris in 2004

-  **40**
Project completions
-  **50**
Ongoing projects
-  **30**
International competitions
-  **12**
International awards



WINNER
GERMAN DESIGN
AWARDS
2020
Excellent Architecture



WINNER
The American
Architecture Prize
2017
Residential Architecture



BEST ARCHITECTURE
Multiple résidence
2013-2014
International
Property Awards



LAURÉAT
Prix 2010
40 UNDER 40
European Centre
of Architecture



**Paris,
Boucicaut district**
-
109 housing units





Athletes' Village for the Paris 2024 Olympic Games





**Moscow,
“The Face of Renovation”**

-
60 000 housing units



SCAU



/ Established 1970

/ 70 architects

/ Sports architect specialist

/ 2 biggest French stadia

/ International experience

/ Developing future sports and lifestyle facilities



FRENCH NATIONAL STADIUM 1996

80 000 SEATS



STADIUM SQUARE CONCEPT

40 000 SEATS, 100 000 m² PROPERTY DEVELOPMENT



STADE BAUER, ST OUEN, FRANCE

15 000 SEATS, 30 000m² PROPERTY DEVELOPMENT



**Landscape architect
DPLG | Studio Falaj**

The background features abstract, overlapping geometric shapes in various shades of blue, ranging from light sky blue to deep navy blue. These shapes are primarily located on the right side of the frame, creating a dynamic, layered effect against the white background.



Ludivine Baruton
Landscape architect DPLG | Studio Falaj



[FALAJ]: name of Oman Oasis irrigation channels.

Like these channels, we feed each site with our creativity and expertise to create beautiful and multisensorial spaces with respect for wildlife and for people enjoyment.

- 18 YEARS INTERNATIONAL EXPERIENCE IN THE FIELD OF LANDSCAPE ARCHITECTURE
- A HOLISTIC APPROACH
- “HAUTE-COUTURE” PROJECTS
- 8 YEARS IN KSA: King Salman Park, King Salman Road, DQ, KFUPM, NEOM...

PROFILE



Medine Masterplan | Mauritius



Woolwich Square | UK



Laveno Resort | Italy



"Funduq" | Cannes, France

EUROPE & OTHERS



Riyadh Public Park* | KSA



Riyadh Garden* | KSA



KFUPM Ladies' School | Damman, KSA

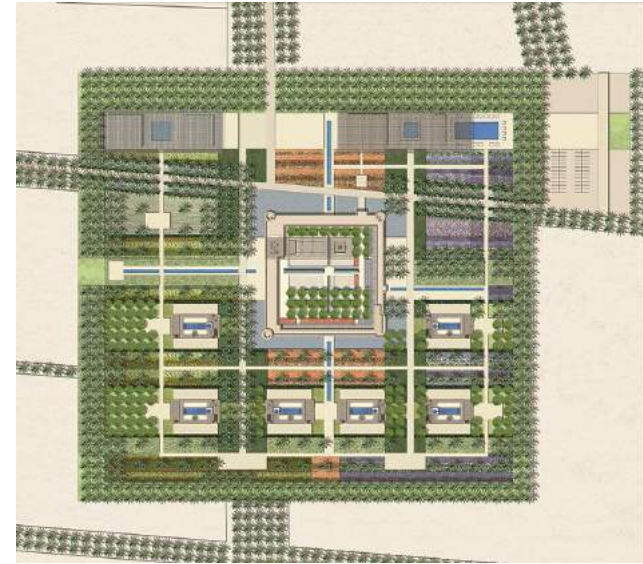


SAUDI ARABIA

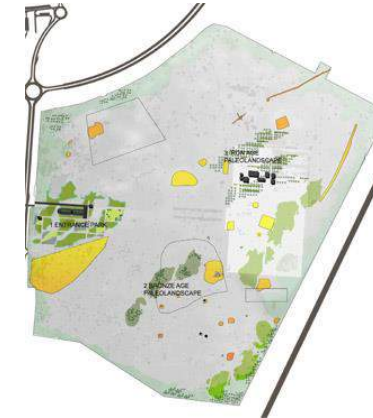
* In collaboration with BPLA for ADA



Mezyad Fort Boutique Hotel | Al Ain, UAE



Hili Archaeological Park* | Al Ain, UAE



The background features abstract geometric shapes in various shades of blue, including triangles and polygons, arranged in a dynamic, overlapping pattern. The shapes are primarily located on the left and right sides of the frame, leaving a large white central area for the text.

TERRELL

Consulting Engineers since 1982

Multi-disciplinary Engineering

Structural
Building Services
Facade & Envelope

Scope of Work

Engineering design
Peer reviews & surveys
Technical site supervision
Feasibility studies & audits
Construction documentation

TERRELL

Consulting Engineers since 1982

Founded in 1982

TERRELL is a leading multi-disciplinary engineering consultancy recognized for its technical expertise and innovative, pragmatic design solutions.

Our Practice

Since its creation by British engineer Peter Terrell, the firm has expanded to take on an international dimension with its headquarters in Paris and offices in London, Toulouse and the Middle East providing services in all major aspects of construction engineering.

The group is renowned for its expertise in structural, building services and facade engineering. Its references are numerous and emblematic: retail and leisure, high-rise towers, large-scale public sector works, office buildings, sporting complexes and cultural facilities.

With a truly **international culture** of 120 **specialist engineers** and skilled professionals we deliver projects of **varying sizes and complexity** in both the **public and private sectors**.

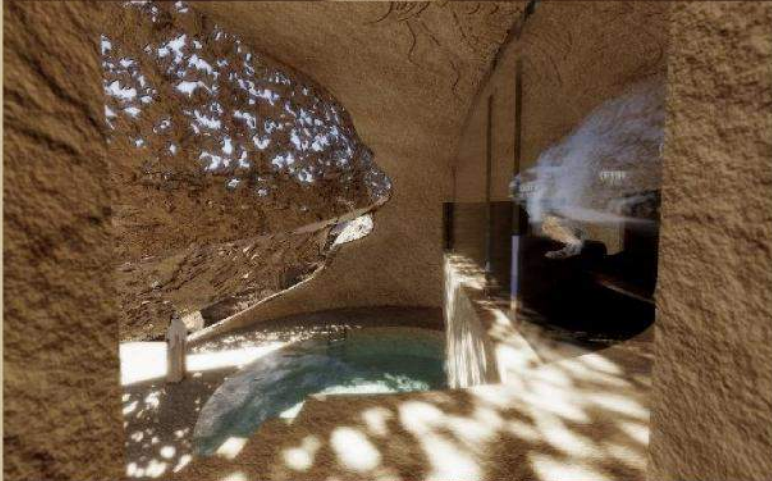
To ensure the best interests of our clients, we adopt a pragmatic approach combining:

- **innovation & teamwork**
- **technical excellence**
- **rigorous analysis**
- **optimum buildability**



**SHARAAN
Hotel,
International
Summit
Centre &
Private Villas**

*Client : Royal
Commission for
Al Ula
Architecte:
Ateliers Jean
Nouvel*



**HATTA DUBAI
Cable Car
Resort**

*Client :
EDF
Architecte:
Groupe-6*





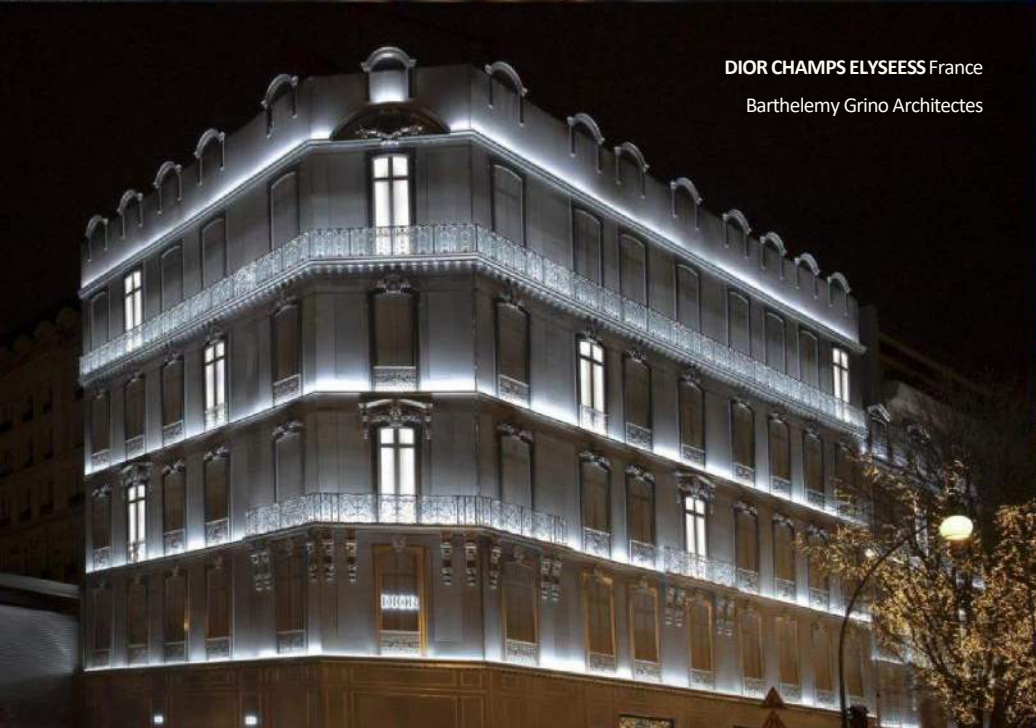
HOTEL CHEVAL BLANC LVMH France
Edouard François



RESTORATION HARDWARE CHAMPS ELYSEES France
B Architecture



APPLE CHAMPS ELYSEES France
Foster & Partners



DIOR CHAMPS ELYSEES France
Barthelemy Grino Architectes



LOUVRE ST HONORE France
B Architecture/Ateliers Jean Nouvel



LVMH CHAMPS ELYSEES France
SRA

DOHA TOWER

Ateliers Jean Nouvel



SILEX²

*Ma Architecture
Arte Charpentier*



LUMA ARLES

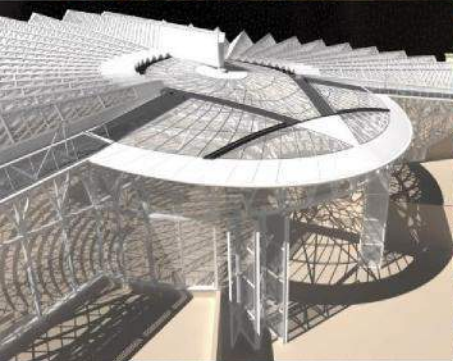
Frank Gehry & Partners



MASDAR INSTITUTE ROOF
Architect : Foster & Partners



DOHA AIRPORT EMIRI TERMINAL
Architect : ADPI



KATARA AMPHITHEATRE DOHA

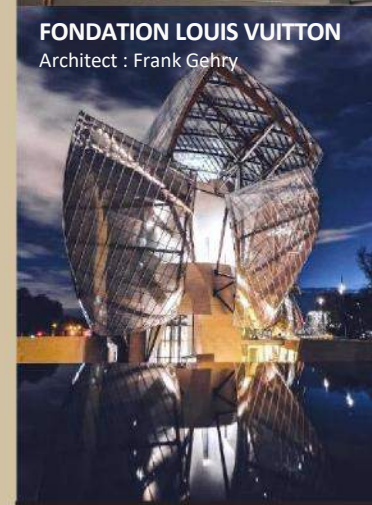


MUNTLAQ JEDDAH
Architect : AREP

KEY
PROJECTS
in the
MIDDLE
EAST
&
FRANCE



CENTRE POMPIDOU METZ
Architect : Shigeru Ban



FONDATION LOUIS VUITTON
Architect : Frank Gehry



GRAND PALAIS PARIS
Architect : LAN Architects



**CITE DU VIN
Bordeaux**
Architect : X-TU Architects



Thank you!

